

# Sportage

Model Year 2025



Movement that inspires

# Sportage MY25 - Mechanical & Feature List

| Engine   | 2.0L Petrol   | 1.6L Turbo Petrol   | 2.0L Turbo Diesel   |                              |
|--|---|---|---|------------------------------|
| Engine Type  | In-Line 4 cyl. DOHC <sup>1</sup> MPI <sup>2</sup> D-CVVT <sup>3</sup> 16 Valve (Smartstream G2.0) | In-Line 4 cyl. DOHC <sup>1</sup> T-GDI <sup>4</sup> D-CVVT <sup>3</sup> 16 Valve (Smartstream G1.6 T-GDI <sup>4</sup> ) | In-Line 4 cyl. E-VGT <sup>5</sup> CRDI <sup>6</sup> 16 Valve (Smartstream D2.0) |                              |
| Capacity (CC)  | 1,999   | 1,598   | 1,998   |                              |
| Max Power (kW @ RPM)   | 115 @ 6,200   | 132 @ 5,500   | 137 @ 4,000   |                              |
| Max Torque (Nm @ RPM)  | 192 @ 4,500   | 265 @ 1,500 ~ 4,500   | 416 @ 2,000 ~ 2,750   |                              |
| Bore x Stroke (mm)   | 81.0 x 97.0   | 75.5 x 89.0   | 83.0 x 92.3   |                              |
| Compression Ratio  | 10.8 : 1  | 10.5 : 1  | 16.0 : 1  |                              |
| Model Variants   | S, SX, SX+  | SX+, GT-Line  | All variants  |                              |
| Fuel   | 2.0L Petrol M/T   | 2.0L Petrol A/T   | 1.6L Turbo Petrol DCT   | 2.0L Turbo Diesel A/T        |
| Fuel Consumption (L/100km) <sup>7</sup> - Urban / Combined / Extra-Urban                       | 9.7 / 7.7 / 6.6   | 11.0 / 8.1 / 6.5  | 8.8 / 7.2 / 6.3   | 7.7 / 6.3 / 5.4              |
| CO <sub>2</sub> Emission (g/km) <sup>7</sup> - Urban / Combined / Extra Urban                  | 220 / 175 / 149   | 249 / 184 / 147   | 200 / 164 / 144   | 200 / 163 / 142              |
| Bonnet Insulator   | •   |   |   |                              |
| Diesel Particulate Filter  | -   |   |   | •                            |
| Fuel Type Recommended  | Regular Unleaded <sup>8</sup>   |   |   | Diesel                       |
| Fuel Tank Capacity (L)   | 54  |   |   |                              |
| Weight   |   |   |   |                              |
| Tare Weight (kg)   | 1,508   | 1,538   | 1,643   | 1,759                        |
| Towing Capacity <sup>9</sup>   |   |   |   |                              |
| Towing Capacity Unbraked / Braked / Max. Towball Download (kg)                                 | 750 / 1,650 / 100   | 750 / 1,650 / 100   | 750 / 1,650 / 100   | 750 / 1,900 / 100            |
| Powertrain Options   | S   | SX  | SX+   | GT-Line                      |
| 2.0 MPI Petrol / 6 Speed Manual / Front Wheel Drive (2WD)                                      | •   | •   | -   | -                            |
| 2.0 MPI Petrol / 6 Speed Automatic / Front Wheel Drive (2WD)                                   | •   | •   | •   | -                            |
| 1.6 T-GDI Petrol / 7 Speed Dual Clutch Transmission (DCT) / All Wheel Drive (AWD)              | -   | -   | •   | •                            |
| 2.0 CRDI Diesel / 8 Speed Automatic / All Wheel Drive (AWD)                                    | •   | •   | •   | •                            |
| Dimensions   |   |   |   |                              |
| Overall Length / Width (mm)  | 4,660 / 1,865   |   |   |                              |
| Overall Height (mm)  | 1,665   |   | 1,680   |                              |
| Wheelbase (mm)   | 2,755   |   |   |                              |
| Minimum Ground Clearance (mm)  | 181   |   |   |                              |
| Luggage Space (Rear Seats Up) (L, VDA)   | 543   |   |   |                              |
| Luggage Space (Rear Seats Down) (L, VDA)   | 1,829   |   |   |                              |
| Steering, Brakes & Suspension  |   |   |   |                              |
| Power Steering System  | Column MDPS <sup>10</sup> (Electric Power Steering)   |   |   |                              |
| DMS <sup>11</sup> System (4 Modes - Eco, Normal, Sport, Smart)                                 | (Not Available on M/T)  |   |   |                              |
| Terrain Mode Select System (3 Modes - Snow, Mud, Sand)   | Diesel AWD Only   |   |   |                              |
| Tilt & Telescopic Adjustable Steering Column   | •   |   |   |                              |
| Minimum Turning Circle (m)   | 11.4 - 12.2   |   |   |                              |
| Front / Rear Suspension  | McPherson Strut / Multi-Link  |   |   |                              |
| Front / Rear Brakes  | 305mm Ventilated Disc / 300mm Solid Disc  |   |   |                              |
| Electronic Parking Brake with Auto Hold  | (Not Available on M/T)  |   |   |                              |
| Wheels & Tyres   |   |   |   |                              |
| Wheel Size / Design  | 17" Machined Alloy  | 18" Machined Alloy  | 19" Machined Alloy  | 19" Machined Alloy (GT-Line) |
| Tyres  | 235/65 R17  | 235/60 R18  | 235/55 R19  | 235/55 R19                   |
| TPMS (Tyre Pressure Monitoring System)   | •   |   |   |                              |
| Spare Wheel Type   | Full Size Alloy   |   |   |                              |
| Safety   |   |   |   |                              |
| Active Safety <sup>12</sup>  |   |   |   |                              |
| ABS (Anti-Lock Braking System) with EBD <sup>13</sup> & BA <sup>14</sup>                       | •   | •   | •   | •                            |
| ESC (Electronic Stability Control) with TCS <sup>15</sup>                                      | •   | •   | •   | •                            |
| DBC (Downhill Brake Control)   | •   | •   | •   | •                            |
| HAC (Hill-Start Assist Control)  | •   | •   | •   | •                            |
| TSA (Trailer Stability Assist)   | (A/T Only)  | (A/T Only)  | •   | •                            |
| MCB (Multi-Collision Braking)  | •   | •   | •   | •                            |
| AEB (Autonomous Emergency Braking) - Car, Pedestrian, Cyclist & Junction Assist                | •   | •   | •   | •                            |
| LKA (Lane Keeping Assist) with Line/Road Edge Detection  | •   | •   | •   | •                            |
| LFA (Lane Following Assist)  | •   | •   | •   | •                            |
| BCW (Blind Spot Collision Warning) with RCCW (Rear Cross Traffic Collision Warning)            | •   | •   | •   | •                            |
| BCA (Blind Spot Collision Avoidance Assist) with RCCA (Rear Cross Traffic Collision Avoidance) | (A/T Only)  | (A/T Only)  | •   | •                            |
| DAA+ (Driver Attention Alert with Lead Vehicle Departure Alert)                                | •   | •   | •   | •                            |
| SEW (Safe Exit Warning)  | •   | •   | •   | •                            |
| ISLA (Intelligent Speed Limit Assist)  | •   | •   | •   | •                            |

| Safety  | S                  | SX                          | SX+                          | GT-Line   |
|---|--------------------|-----------------------------|------------------------------|---|
| Parking Sensors with Dash Display   | (Rear Only)        | (Front & Rear)              | (Front & Rear)               | (Front & Rear)  |
| Haptic Steering Wheel Feedback  | •                  | •                           | •                            | •   |
| Rear View Camera with Dynamic Parking Guidelines  | •                  | •                           | •                            | •   |
| 3-Point ELR Seatbelts on All Positions  | •                  | •                           | •                            | •   |
| ROA (Rear Occupant Alert) - Basic Type  | •                  | •                           | •                            | •   |
| HBA (High Beam Assist)  | (A/T Only)         | (A/T Only)                  | •                            | •   |
| Dusk-Sensing Automatic Headlights   | •                  | •                           | •                            | •   |
| Front Wiper & Washer (Low/High and 5-Speed Intermittent)  | •                  | •                           | •                            | •   |
| Child Restraint Anchorage Points (3 x Top Tether Anchors + 2 x Isofix Positions)                | •                  | •                           | •                            | •   |
| Rain Sensing Wipers   | -                  | •                           | •                            | •   |
| Electrochromic Rear View Mirror (Auto Dimming)  | -                  | -                           | •                            | •   |
| SVM (Surround View Monitor) with 3D Mode  | -                  | -                           | -                            | •   |
| BVM (Blind Spot View Monitor)   | -                  | -                           | -                            | •   |
| PCA (Parking Collision Avoidance Assist - Reverse)  | -                  | -                           | -                            | •   |
| <b>Passive Safety</b>   |                    |                             |                              |   |
| Driver & Front Passenger SRS Airbags  | •                  | •                           | •                            | •   |
| Centre Side Airbag (Front)  | •                  | •                           | •                            | •   |
| Front Side SRS Airbags  | •                  | •                           | •                            | •   |
| Curtain SRS Airbags   | •                  | •                           | •                            | •   |
| Front Seatbelt Pre-Tensioners with Load Limiters  | •                  | •                           | •                            | •   |
| <b>Security</b>   |                    |                             |                              |   |
| Burglar Alarm   | •                  | •                           | •                            | •   |
| Anti-Theft Immobiliser  | •                  | •                           | •                            | •   |
| Remote Central Locking with Boot Release  | •                  | •                           | •                            | •   |
| Headlight Escort Function   | •                  | •                           | •                            | •   |
| Folding Key Remote (x 2)  | •                  | •                           | -                            | -   |
| Smart Key Remote (x 2) with Push Button Start   | -                  | -                           | •                            | (Petrol)  |
| Smart Key Remote (x 2) with Push Button Start and RSPA <sup>16</sup> (Remote Smart Park Assist) | -                  | -                           | -                            | (Diesel)  |
| <b>Seating</b>  |                    |                             |                              |   |
| Seat Capacity   | 5                  | 5                           | 5                            | 5   |
| Seat Trim   | Cloth              | Cloth                       | Artificial Leather (Quilted) | Leather Appointed <sup>17</sup> with Artificial Suede Upper |
| Front Centre Console Armrest  | •                  | •                           | •                            | •   |
| Height Adjustable Front Seatbelts   | •                  | •                           | •                            | •   |
| Rear Centre Armrest   | •                  | •                           | •                            | •   |
| Split Fold Rear Seats (60:40)   | •                  | •                           | •                            | •   |
| Height Adjustable Headrests (All Seats)   | •                  | •                           | •                            | •   |
| 6-Way Drivers Seat Including Height Adjust (Pumping Device)                                     | •                  | (with 2-Way Lumbar Support) | -                            | -   |
| 8-Way Power Drivers Seat with 2-Way Power Lumbar Support  | -                  | -                           | •                            | •   |
| IMS <sup>18</sup> Drivers Seat with 2-Position Memory   | -                  | -                           | -                            | •   |
| 8-Way Power Front Passenger Seat  | -                  | -                           | -                            | •   |
| <b>Exterior Features</b>  |                    |                             |                              |   |
| Exterior Body Design  | Design Type A      |                             | Design Type B                |   |
| Wheel Arch Mouldings and Bumper Trim  | Matte Plastic      | Gloss Black                 | Matte Plastic                |   |
| Roof Rails  | Silver (Slim Type) |                             | Gloss Black (Bridge Type)    |   |
| Outside Door Mirrors with Integrated Side Indicators  | Body Coloured      |                             | Gloss Black                  |   |
| Electric Outside Door Mirrors (Adjust/Heated/Folding)   | •                  | •                           | •                            | •   |
| LED Daytime Running Lights  | •                  | •                           | •                            | •   |
| Rear Spoiler with Integrated High Mounted Stop Lamp (LED)                                       | •                  | •                           | •                            | •   |
| Hidden Rear Wiper   | •                  | •                           | •                            | •   |
| Shark Fin Antenna   | •                  | •                           | •                            | •   |
| Mud Flaps (Front & Rear)  | •                  | •                           | •                            | •   |
| LED Head Lights (MFR Type with Bulb Indicator)  | •                  | •                           | •                            | -   |
| LED Tail Lights (Bulb Indicator and Stop Lights)  | •                  | •                           | •                            | -   |
| LED Front Fog Lights (MFR Type)   | -                  | -                           | •                            | •   |
| Hands-Free Smart Power Tailgate   | -                  | -                           | •                            | •   |
| Privacy Glass (Rear Windows & Tailgate)   | -                  | -                           | •                            | •   |
| LED Head Lights (Projector Type/Full LED)   | -                  | -                           | -                            | •   |
| LED Tail Lights (Full LED)  | -                  | -                           | -                            | •   |
| Panoramic Sunroof with Safety Function  | -                  | -                           | -                            | •   |
| <b>Interior Features</b>  |                    |                             |                              |   |
| Leather Appointed <sup>17</sup> Steering Wheel  | •                  | •                           | •                            | •   |
| Multi-Function Trip Computer (Distance Traveled, Fuel Consumption, Distance to Empty, Etc)      | •                  | •                           | •                            | •   |
| Power Windows (Front & Rear)  | •                  | •                           | •                            | •   |
| Driver & Passenger Sunvisors with Sliding Function  | •                  | •                           | •                            | •   |
| 2 x USB Chargers In Front Tray (1 x USB-A & 1 x USB-C)  | •                  | •                           | •                            | •   |
| 2 x 12 Volt Power Outlets (Boot Side/Front Tray)  | •                  | •                           | •                            | •   |

| Interior Features  | S                              | SX            | SX+                   | GT-Line                |
|--|--------------------------------|---------------|-----------------------|------------------------|
| Auto Up/Down Drivers Window with Safety Function   | •                              | •             | •                     | •                      |
| Soft-Touch Dashboard   | •                              | •             | •                     | •                      |
| Dashboard Garnish  | Gunmetal Grey (Diamond Relief) | Brushed Metal | Premium Weave Pattern | Woodgrain Hydrographic |
| ASCC (Advanced Smart Cruise Control) with Stop and Go                                    | (A/T Only)                     | (A/T Only)    | •                     | •                      |
| Soft-Touch Door Armrest & Door Upper (Front)   | -                              | •             | •                     | •                      |
| Leather Appointed <sup>17</sup> Shift Knob   | -                              | •             | •                     | -                      |
| 2 x USB Chargers (USB-C) in Front Seat Backs   | -                              | -             | •                     | •                      |
| Steering Wheel Paddle Shifters   | -                              | -             | •                     | •                      |
| Shift By Wire Shift Knob (Dial Type)   | -                              | -             | -                     | •                      |
| Alloy Sports Pedals  | -                              | -             | -                     | •                      |
| LED Interior Lighting (Front & Rear) with Delay Out                                      | -                              | -             | -                     | •                      |
| Ambient Mood Lighting (64 Colours)   | -                              | -             | -                     | •                      |
| Wireless Phone Charging <sup>19</sup>  | -                              | -             | -                     | •                      |
| <b>Storage</b>   |                                |               |                       |                        |
| 4 x Cup Holders (2 x Front Console, 2 x Rear Centre Armrest)                             | •                              | •             | •                     | •                      |
| 4 x Bottle Holders (Front & Rear Doors)  | •                              | •             | •                     | •                      |
| Map Pockets In Front Doors   | •                              | •             | •                     | •                      |
| Centre Console Storage Box with Lid  | •                              | •             | •                     | •                      |
| Front Seat Back Pockets  | •                              | •             | •                     | •                      |
| 2 x Coat Hangers (Front Headrests)   | -                              | -             | •                     | •                      |
| Luggage Net Hooks (Cargo Area)   | •                              | •             | •                     | •                      |
| Cargo Cover (Retractable)  | •                              | •             | •                     | •                      |
| Front Storage Tray   | •                              | •             | •                     | with Sliding Lid       |
| Remote Folding 2nd Row Seat (Release Lever x2 In Boot)                                   | -                              | •             | •                     | •                      |
| Luggage Net  | -                              | -             | -                     | •                      |
| <b>Infotainment &amp; Driver Display</b>   |                                |               |                       |                        |
| AM/FM Radio  | •                              | •             | •                     | •                      |
| DAB Digital Radio  | -                              | •             | •                     | •                      |
| Sounds of Nature   | -                              | •             | •                     | •                      |
| Steering Wheel Mounted Audio/Bluetooth® Controls   | •                              | •             | •                     | •                      |
| Bluetooth® Multi-Connection Functionality (Phone/Media Stream) <sup>20</sup>             | •                              | •             | •                     | •                      |
| Wired Android Auto™ <sup>21</sup> with Voice Recognition                                 | •                              | •             | •                     | •                      |
| Wireless <sup>22</sup> Android Auto™ <sup>21</sup> with Voice Recognition                | •                              | -             | -                     | -                      |
| Wireless <sup>23</sup> Apple Carplay™ <sup>24</sup> with Voice Recognition               | •                              | -             | -                     | -                      |
| 6 Speaker Sound System (4 Speakers, 2 Tweeters)  | •                              | •             | -                     | -                      |
| 8" Colour Touch Screen Infotainment  | -                              | -             | -                     | -                      |
| 12.3" Colour LCD Touch Screen Infotainment   | -                              | •             | •                     | -                      |
| Basic Digital Driver Cluster with 4.2" Multi Function LCD Display                        | •                              | •             | •                     | -                      |
| Wired Apple Carplay™ <sup>24</sup> with Voice Recognition                                | -                              | •             | •                     | •                      |
| Satellite Navigation Multimedia System with 10 Years Traffic Information and Map Updates | -                              | •             | •                     | •                      |
| Personalised Profile (Radio Favourites, Bluetooth Priority etc)                          | -                              | •             | •                     | •                      |
| 8 Speaker Harman Kardon® Premium Sound System (5 Speakers, 2 Tweeters, Subwoofer)        | -                              | -             | •                     | •                      |
| Curved Display (12.3" Digital Driver Cluster + 12.3" Touch Screen Infotainment)          | -                              | -             | -                     | •                      |
| <b>Ventilation</b>   |                                |               |                       |                        |
| 2nd Row Vents (Behind Centre Console)  | •                              | •             | •                     | •                      |
| Single Zone Air-Conditioning   | •                              | -             | -                     | -                      |
| Dual-Zone Climate Control Air-Conditioning   | -                              | •             | •                     | •                      |
| Auto Windscreen Defog  | -                              | •             | •                     | •                      |
| Heated Front Seats   | -                              | -             | •                     | •                      |
| Ventilated Front Seats   | -                              | -             | -                     | •                      |

• Standard - Not available

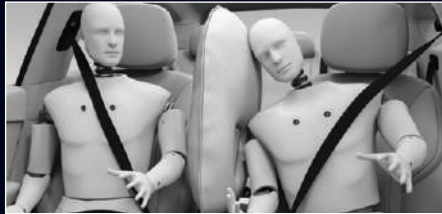
Specifications apply to 2025 Model Year Sportage. Kia Australia reserves the right to discontinue or change the models, features, specifications, options, designs and prices of products referred to in this sheet without incurring any liability whatsoever to any purchaser or prospective purchaser of any such products. Some of the items herein are optional at additional cost. Consult your Kia dealer for the latest information on models, specifications, features, prices, options and availability. Note: Model Year 2025 Sportage will undergo all necessary inspections when available. Until inspections are complete, all information and illustrations are based on data available at the time of publication and subject to change without notice. <sup>1</sup>DOHC - Dual Overhead Cam. <sup>2</sup>MPI - Multi-Point Injection. <sup>3</sup>D-CVVT - Dual Continuous Variable Valve Timing. <sup>4</sup>T-GDI - Turbo Gasoline Direct Injection. <sup>5</sup>E-VGT - Electronic Variable Geometry Turbocharger. <sup>6</sup>CRDI - Common-Rail Direct Injection. <sup>7</sup>ADR81/02. <sup>8</sup>E10 Compatible. <sup>9</sup>Subject to State regulations and towbar design. <sup>10</sup>MDPS - Motor Driven Power Steering. <sup>11</sup>DMS - Drive Mode Select. <sup>12</sup>Safety technologies are supplemental systems and do not replace the need for the driver to exercise care and attention. <sup>13</sup>EBD - Electronic Brake Distribution. <sup>14</sup>BA - Brake Assist. <sup>15</sup>TCS - Traction Control System. <sup>16</sup>The Road Traffic Code 2000 in WA prohibits people from driving a vehicle unless a person is behind the steering wheel and they have full control over the vehicle. The use of this Remote Smart Park Assist (RSPA) feature will not comply with this rule and thus it should not be used while within WA. <sup>17</sup>Leather appointed seats may comprise of genuine leather, polyurethane and other man-made materials or a combination thereof. <sup>18</sup>IMS - Integrated Memory Seat. <sup>19</sup>Wireless charging compatible with phones featuring Qi technology or adapter. <sup>20</sup>Not all mobile phones will be compatible with the vehicle's Bluetooth® system. Bluetooth® is a registered trademark of Bluetooth SIG. <sup>21</sup>Android Auto™ connectivity requires compatible Android device. See android.com/intl/en\_au/ for more details. Android Auto™ is a registered trademark of Google Inc. <sup>22</sup>Wireless Android Auto™ function requires compatible smartphone and also supports wired connectivity. <sup>23</sup>Wireless Apple CarPlay™ function requires compatible smartphone and does not support wired connectivity. <sup>24</sup>Apple CarPlay™ connectivity requires compatible iOS device. See apple.com.au for more details. Apple CarPlay™ is a registered trademark of Apple Inc. Harman/Kardon® is a registered trademark of Harman International Industries, Incorporated. For full terms and conditions on Kia's 7 Year warranty, visit [kia.com/au](http://kia.com/au)

# Features



Overseas Model Shown

Blind Spot Collision Avoidance Assist with Rear Cross Traffic Collision Avoidance<sup>1</sup> (Not Available on M/T)



Front Centre Side Airbag



Tuned for Australian Roads



Overseas Model Shown

Autonomous Emergency Braking<sup>1</sup> (with Junction Assist)



Bluetooth<sup>®</sup> Multi-Connection Functionality<sup>2</sup>



8 Speaker Harman Kardon Premium Sound System (SX+, GT-Line)



Overseas Model Shown

Remote Smart Park Assist<sup>3</sup> (GT-Line Diesel)

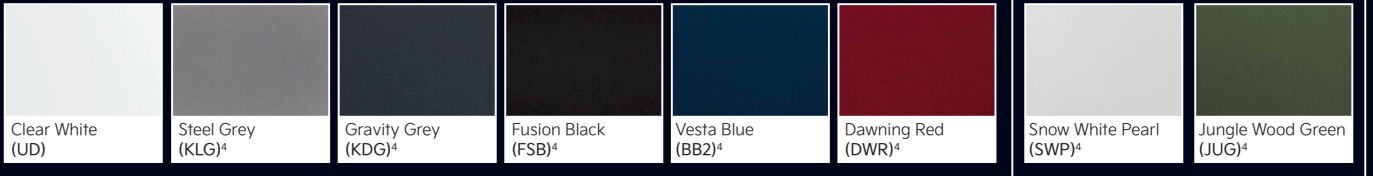


Blind Spot View Monitor<sup>1</sup> (GT-Line)



Curved Display (12.3\"/>

## Exterior Colours



## Interior Colours



Black Cloth Trim (S, SX)

Black Quilted Artificial Leather (SX+)

Black Leather Appointed<sup>5</sup> with Artificial Suede Upper (GT-Line)

## Wheels



17\"/>

18\"/>

## Engines



115kW 2.0L Petrol (S, SX & SX+)

132kW 1.6L Turbo Petrol (SX+ & GT-Line)

137kW 2.0L Turbo Diesel (S, SX, SX+ & GT-Line)



19\"/>

19\"/>

<sup>1</sup>Safety technologies are supplemental systems and do not replace the need for the driver to exercise care and attention. <sup>2</sup>Not all mobile phones will be compatible with the vehicle's Bluetooth<sup>®</sup> system. Bluetooth<sup>®</sup> is a registered trademark of Bluetooth SIG. <sup>3</sup>The Road Traffic Code 2000 in WA prohibits people from driving a vehicle unless a person is behind the steering wheel and they have full control over the vehicle. The use of this Remote Smart Park Assist (RSPA) feature will not comply with this rule and thus it should not be used while within WA. <sup>4</sup>Premium paint at additional cost. <sup>5</sup>Leather appointed seats may comprise of genuine leather, polyurethane and other man-made materials or a combination thereof. For full terms and conditions on Kia's 7 Year warranty, visit [kia.com/au](http://kia.com/au)



Kia Australia Pty Ltd ABN 97 110 483 353  
 Locked Bag 2207, North Ryde BC NSW 1670  
 Phone 131 KIA (131 542)  
[kia.com/au](http://kia.com/au)



Kia. Driving Australian Sport.